

# INSPIRE V4 ZEUS CONNECTOR



## Power Lead/Hardwire Connector



**#V4-CON-HW-10-IWR-BLK**  
**#V4-CON-HW-25-IWR-BLK**

- Connect the driver to the Inspire V4 LED tape light.
- Available in 10 foot and 25 foot lengths.
- 18AWG wire size.

## Splitter/T-Connector



**#V4-CON-T-IWR-BLK**

- Split one run of Inspire V4 LED tape light into two runs.
- Includes three female-female adapters with each CON-T to connect extension cables.
- 18AWG wire size.

## Jumpers/Extensions



**#V4-EXT-2IN-IWR-BLK**  
**#V4-EXT-4IN-IWR-BLK**  
**#V4-EXT-1FT-IWR-BLK**  
**#V4-EXT-3FT-IWR-BLK**  
**#V4-EXT-6FT-IWR-BLK**  
**#V4-EXT-12FT-IWR-BLK**

- Connect two runs of Inspire V4 LED tape light together.
- Available in 2 inch, 4 inch, 1 foot, 3 foot, 6 foot, and 12 foot lengths.
- 18AWG wire size.

RGB

## Power Lead/Hardwire Connector



**#V4-CON-HW-10-RGB-IWR-BLK**  
**#V4-CON-HW-25-RGB-IWR-BLK**

- Connect the RGB components to the Inspire V4 RGB LED tape light.
- Available in 10 foot and 25 foot lengths.
- 18AWG wire size.

RGB

## Splitter/T-Connector



**#V4-CON-T-RGB-IWR-BLK**

- Split one run of Inspire V4 RGB LED tape light into two runs.
- Includes three female-female adapters with each CON-T-RGB to connect extension cables.
- 24AWG wire size.

RGB

## Jumpers/Extensions

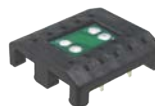


**#V4-EXT-2IN-RGB-IWR-BLK**  
**#V4-EXT-4IN-RGB-IWR-BLK**  
**#V4-EXT-1FT-RGB-IWR-BLK**  
**#V4-EXT-3FT-RGB-IWR-BLK**  
**#V4-EXT-6FT-RGB-IWR-BLK**  
**#V4-EXT-12FT-RGB-IWR-BLK**

- Connect two runs of Inspire V4 RGB LED tape light together.
- Available in 2 inch, 4 inch, 1 foot, 3 foot, 6 foot, and 12 foot lengths.
- 24AWG wire size for the 2IN and 4IN lengths; 18AWG wire size for all other lengths.

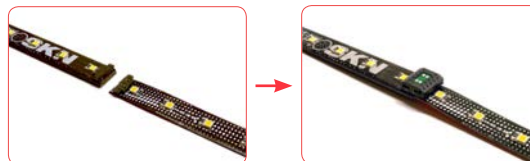
Single Color & RGB

## Splice Connector



**#V4-EXT-SPLICE-BLK**

- Connect two cut ends of Inspire V4 Tape Light together.
- No gaps in light.
- Both single color and RGB compatible.



012017