



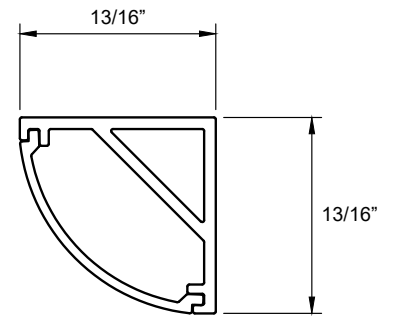
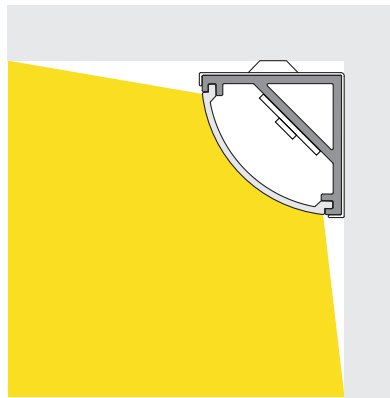
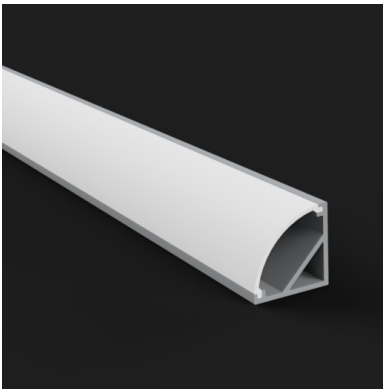

TYPE

LOCATION

PART NUMBER

PROJECT NAME

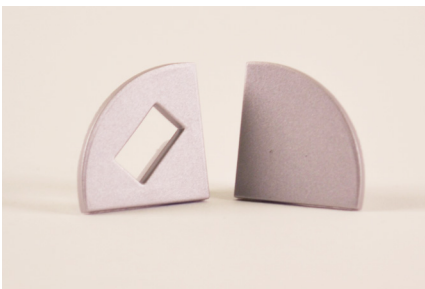
# Inspire Angled Channel Surface Mount Aluminum Channel



## Specifications

<b>Mounting Type</b>	Surface Mount
<b>Construction</b>	Aluminum
<b>Channel Color</b>	Anodized Aluminum
<b>Lens Types</b>	<ul style="list-style-type: none"> <li>• Frosted</li> <li>• Clear</li> </ul>
<b>Lens Construction</b>	UV-Coated Polycarbonate
<b>Environment</b>	Indoor or Outdoor
<b>Warranty</b>	5-year Limited

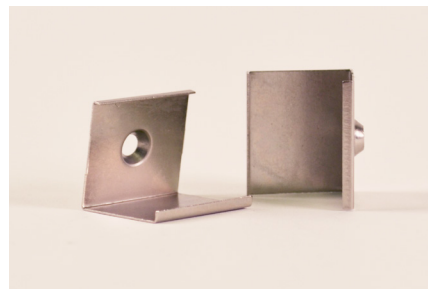
## Channel Accessories



### Extra End Caps

Extra set of end caps. Installs onto the ends of the channel. QTY 2.

**CH1-END-ANG**



### Extra Mounting Clips

Extra set of surface mount mounting clips. QTY 3.

**CH1-MNT-ANG**

# LEDI // Inspire Angled Channel Product Specifications

## Ordering Information

### Channel Kits

A Channel Kit includes one (1) unassembled channel with a lens, end caps, and mounting hardware.

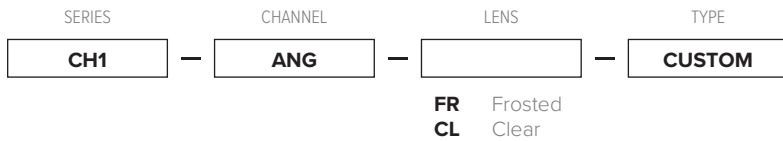


### Custom Cut Channel

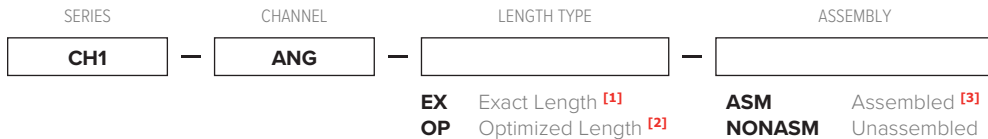
Custom Cut Channels are cut to a custom length and include enough lens, end caps, and mounting hardware to accommodate the length.

**Custom channels will have a longer lead time. Please contact LEDI for an estimated lead time.**

#### 1 Specify the Channel

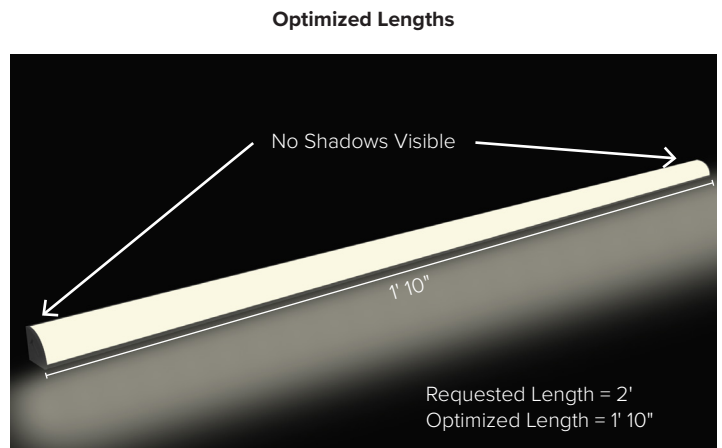
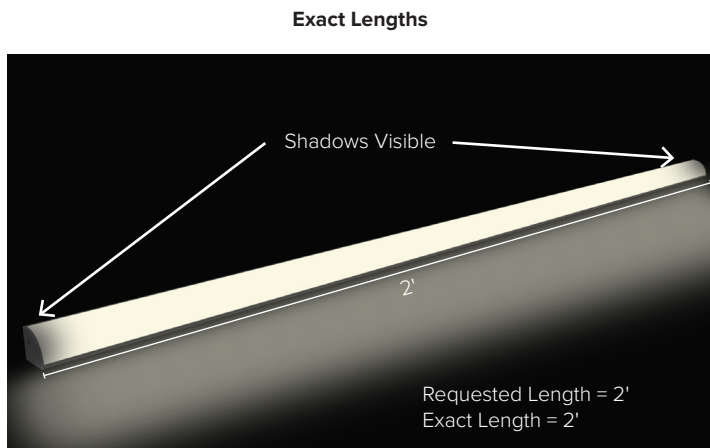


#### 2 Specify the Build Type of the Channel



- 1 Channels will be cut to the exact length requested. Some shadows may be visible at the ends of the channels because the channel length is not optimized to fit the LED tape light inside.
- 2 Channels cut to an optimized length will be cut to best fit the LED tape light inside the channel, minimizing shadows at its ends. Optimized lengths may slightly differ from the requested length, depending on the LED tape light model.
- 3 Channels will ship assembled if the overall length of the fixture is 6ft (72") or shorter. Channels longer than 6ft must ship unassembled.

### Length Types for Custom Cut Channel



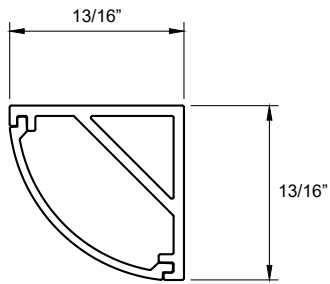
The channel is cut to the exact length you request. Because the requested length may not be optimized to best fit the LED tape light, shadows may be visible at each end of the channel.

The channel is cut to a length that best fits the LED tape light, minimizing shadows at the ends of the channel. Optimized lengths may slightly differ from the requested length, depending on the LED tape light model.

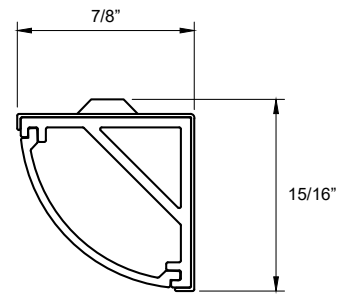
# LEDI // Inspire Angled Channel Product Specifications

## Product Dimensions

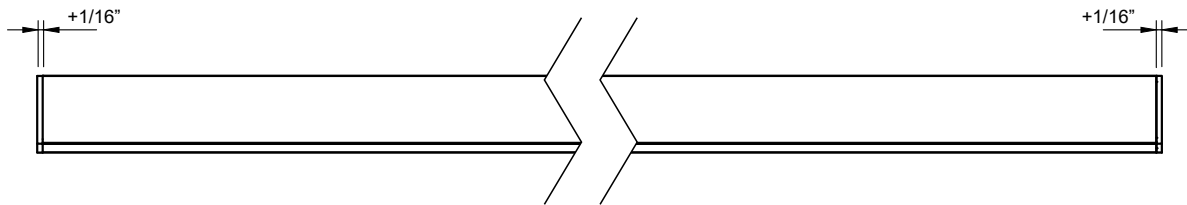
### Channel Dimensions



### Mounting Clip Dimensions



### End Cap Dimensions

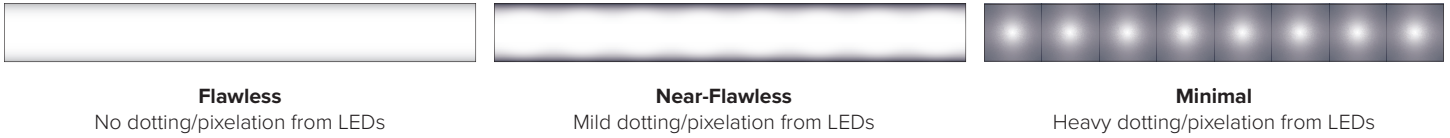


End caps add  $1/16"$  to each end of the channel.

# LEDI // Inspire Angled Channel Product Specifications

## Lumen Output & Lens Diffusion Rates

The table below shows the lumen per foot output of compatible LED tape light inside this channel, and also how each model of LED tape light diffuses under the lens of the channel. The images below serve as a visual aid to best illustrate the different levels of diffusion.



		Lumen Output (per foot)									
LED Tape Light	Diffusion Rate (Frosted Lens)	4000K	3500K	3000K	2700K	2100K	1800K	RGB	RGBW	Tunable White	Warm Dim
Inspire V5 Spec 1.5	Flawless	150	148	145	136	117	98	—	—	—	—
Inspire V5 Spec 2.8	Flawless	230	242	226	207	187	179	—	—	—	—
Inspire V5 Spec 4.0	Flawless	399	369	353	327	315	258	—	—	—	—
Inspire V5 Spec 5.0	Flawless	464	452	429	391	373	275	—	—	—	—
Inspire V5 Spec 7.5	Flawless	628	663	588	530	509	459	—	—	—	—
Inspire LightLine™ COB 1.5	Flawless	114	110	106	95	80	61	—	—	—	—
Inspire LightLine™ COB 2.8	Flawless	209	205	198	194	152	122	—	—	—	—
Inspire LightLine™ COB 5.5	Flawless	401	372	348	349	271	204	—	—	—	—
Inspire LightLine™ COB RGB	Flawless	—	—	—	—	—	—	103*	—	—	—
Inspire LightLine™ COB Outdoor <sup>1)</sup>	Flawless	296	—	270	258	—	—	—	—	—	—
Inspire V5 Standard Eco	Minimal	122	120	112	109	100	78	—	—	—	—
Inspire V5 Standard Bright	Minimal	149	147	142	135	122	108	—	—	—	—
Inspire V5 Standard Super Bright	Near-Flawless	372	353	350	304	302	265	—	—	—	—
Inspire RGB 4.0	Minimal	—	—	—	—	—	—	137*	—	—	—
Inspire RGB 6.0	Flawless	—	—	—	—	—	—	293*	—	—	—
Inspire RGBW	Near-Flawless	—	—	—	—	—	—	—	289*	—	—
Inspire Tunable White	Flawless	—	—	—	—	—	—	—	—	448*	—
Inspire Warm Dim	Flawless	—	—	—	—	—	—	—	—	—	190*
Inspire V4 Nude™ Bright	Minimal	137	133	125	110	106	87	—	—	—	—
Inspire V4 Nude™ Super Bright	Minimal	255	247	236	205	198	171	—	—	—	—
Inspire V4 Nude™ RGB	Minimal	—	—	—	—	—	—	137*	—	—	—
Inspire V4 NanoSKN™ Bright	Minimal	137	133	125	110	106	87	—	—	—	—
Inspire V4 NanoSKN™ Super Bright	Minimal	255	247	236	205	198	171	—	—	—	—
Inspire V4 NanoSKN™ RGB	Minimal	—	—	—	—	—	—	137*	—	—	—

<sup>1</sup> Using this specific LED tape light with this channel has some limitations. Please contact our Design Team at (832) 717-2710 or designs@ledinspirations.com for more details.

\* Max lumen output shown. Other colors vary.