



Inspire Neon Flex 0103 Side Bend

24V DC LED Neon Flex

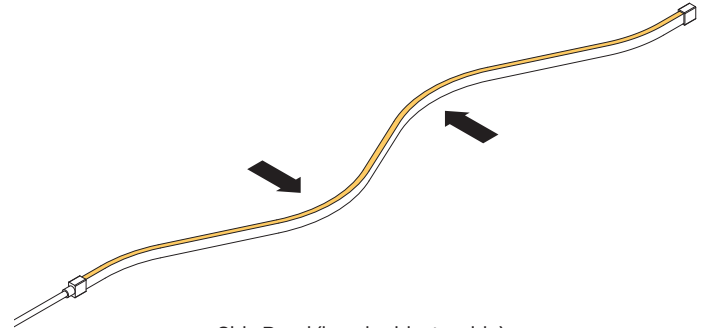
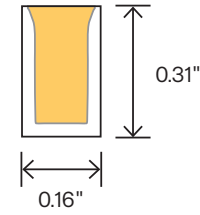
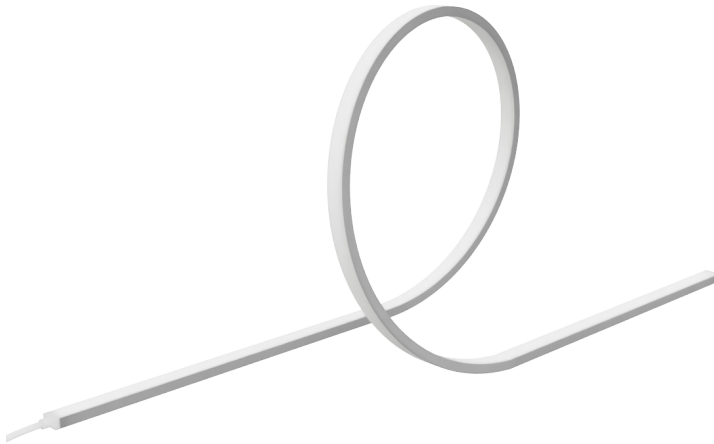
Fixture Type

Part Number

Quantity

Project Name

Signature



Side Bend (bends side-to-side)

Specifications

Colors	2700K, 3000K, 3500K, and 4000K
Bend Type	Side Bend (side-to-side)
Minimum Bend Diameter	4.7"
Input Power	24V DC
Watts per Foot	2.44
Max Run Length	16FT
Cut Length	Every 2"
Product Material	UV-Resistant Silicone
Product Color	White
Max Operating Temp.	32°F to 131°F (0°C to 55°C)
Max Ambient Temp.	-13°F to 131°F (-25°C to 55°C)
Beam Angle	120°
Lamp Life	50,000 Hours
Environment	IP65 Indoor or Outdoor
Certifications	UL Listed for The United States and Canada - File # E467147 UL Listed per UL2108 Low Voltage Lighting Systems/CSA C22.2 No. 250.0-08-Luminaires/UL8750
Dimming	0-10V, MLV, ELV, Incandescent, and CFL/LED

Performance

Color Temperature	Lumens/FT	Efficacy	CRI
2700K	65	18 lm/W	90
3000K	69	20 lm/W	90
3500K	75	23 lm/W	90
4000K	80	27 lm/W	90



Inspire Neon Flex 0103 Side Bend

24V DC LED Neon Flex

Fixture Type

Part Number

Quantity

Project Name

Signature

Specify

Example: NF1-S0103S-27-1E-CLP-ELV-8FT6IN

Part Number:

Series	Model	Color	Connector	Mounting Hardware	Dimming & Control	Length
NF1	S0103S	27 2700K	1E IP68 Single End	CLP Mounting Clips	010 0-10V	[INSERT LENGTH]
		30 3000K	2E IP68 Double End	CHN Polycarbonate Channel	MLV MLV	
		35 3500K			ELV ELV	
		40 4000K			INC Incandescent	
					CLD CFL/LED	
					NDIM Non-Dimming	
					CAS Casambi Controlled	

Quickship Products

Available to ship within 48-hours (excluding weekends and holidays).

Neon Flex

Part Number	Color	Length	Includes
NF1-S0103S-27-2E-22	2700K	22FT	Pre-Assembled Double End Connector and (2) end caps
NF1-S0103S-30-2E-22	3000K	22FT	Pre-Assembled Double End Connector and (2) end caps
NF1-S0103S-35-2E-22	3500K	22FT	Pre-Assembled Double End Connector and (2) end caps
NF1-S0103S-40-2E-22	4000K	22FT	Pre-Assembled Double End Connector and (2) end caps

Mounting Hardware (see pg. 3 for more details)

Part Number	Type	Length	Includes
NF1-CHN-AL4-1M	Polycarbonate Channel	3.28FT	Channel and screws
NF1-MNT-CL4	Mounting Channel	n/a	(10) Clips and screws



Inspire Neon Flex 0103 Side Bend

24V DC LED Neon Flex

Fixture Type

Part Number

Quantity

Project Name

Signature

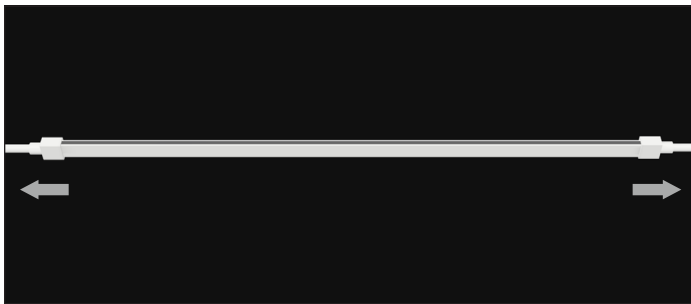
Pre-Assembled Connectors

Pre-assembled with the Neon Flex. See page 2 for ordering information.



Single End (1E)

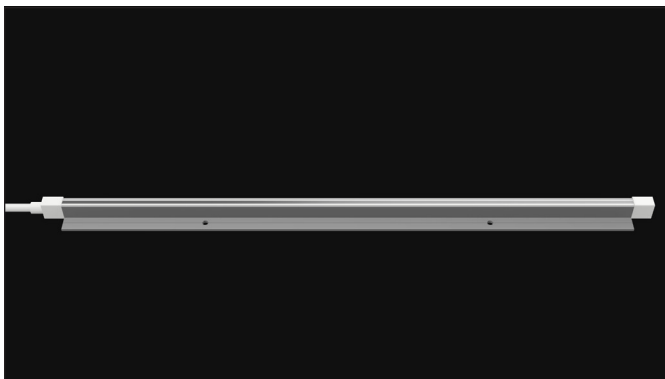
(1) connector that exits out the end of the Neon Flex. The opposite end is sealed.



Double End (2E)

(1) connector exits out the back of the Neon Flex. The opposite end, also, has (1) connector that exits out the back of the Neon Flex.

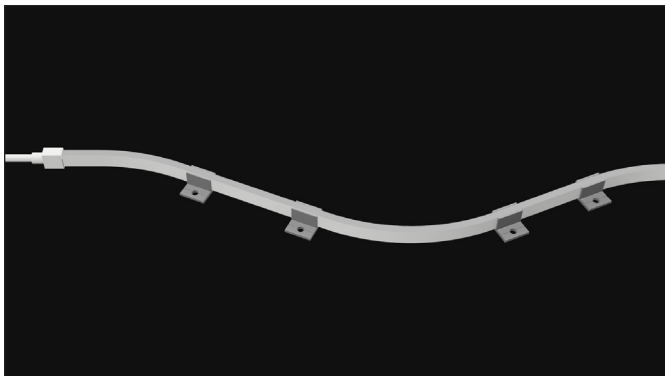
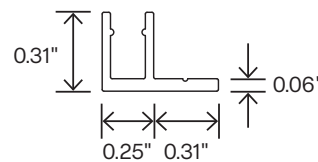
Mounting Hardware



Polycarbonate Channel

For mounting straight runs of Neon Flex.

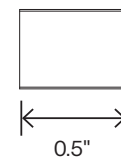
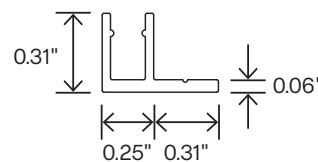
Part Number	Length	Includes
NF1-CHN-AL4-1M	3.28FT	Channel and screws



Mounting Clips

For mounting Neon Flex that bends side-to-side.

Part Number	Includes
NF1-MNT-CL4	(10) mounting clips and screws



For simple bends:
Use 3-4 clips per foot

For more complex bends:
Use 5 clips per foot



Inspire Neon Flex 0103 Side Bend

24V DC LED Neon Flex

Fixture Type

Part Number

Quantity

Project Name

Signature

Compatible LED Drivers

See the specific driver spec sheet for specifications.



DimALL™ Dimmable Drivers

Part Number	Capacity	Class 2	Dimming Type	Input Voltage
DR-30W-24V-DIMALL	30W	Yes	0-10V, MLV, ELV, Incandescent, CFL/LED	120-277V AC
DR-60W-24V-DIMALL	60W	Yes		
DR-96W-24V-DIMALL	96W	Yes		
DR-150W-24V-DIMALL	150W	No		
DR-192W-24V-DIMALL	(2) 96W	Yes		
DR-200W-24V-DIMALL	200W	No		
DR-288W-24V-DIMALL	(3) 96W	Yes		
DR-300W-24V-DIMALL	300W	No		



Electronic 0-10V Dimmable Drivers

Part Number	Capacity	Class 2	Dimming Type	Input Voltage
DR-60W-24VDC-U-2-10-c	60W	Yes	0-10V	120-277V AC
DR-100W-24VDC-U-2-10-c	100W	Yes		
DR-200W-24VDC-U-2-10-g	(2) 100W	Yes		



Plug-In Drivers

Part Number	Capacity	Class 2	Dimmable	Input Voltage
DR-36W-24VDC-120V-2-ND-e	30W	Yes	No	120-240V AC
DR-96W-24VDC-120V-2-ND-e	96W	Yes		
DR-144W-24VDC-120V-1-ND-e	144W	No		



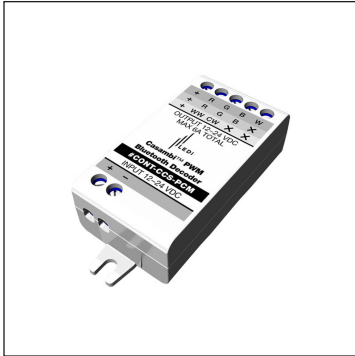
Inspire Neon Flex 0103 Side Bend

24V DC LED Neon Flex

Fixture Type	
Part Number	
Quantity	
Project Name	
Signature	

Compatible Lighting Controls

See the specific lighting control spec sheet for specifications. Additional components may be required.



Casambi PWM Bluetooth Decoder

Installed between the Neon Flex and the LED driver. Communicates wirelessly with the Casambi app and Casambi Wireless Wall Controller.

Part Number	Communication	Compatible LED Driver	Compatibility
CONT-CCS-PCM	Bluetooth Mesh	Electronic 0-10V & Plug-In	All Neon Flex



Casambi Wireless Wall Controller

Wall-mounted controller that communicates wirelessly with the Casambi app and Casambi PWM Bluetooth Decoder.

Part Number	Communication	Required Components	Compatibility
CONT-CCS-WSC	Bluetooth Mesh	Casambi PWM Bluetooth Decoder	All Neon Flex